

EAI-I731

Compact AI Platform with 12/13/14th Gen Intel® Core i Processors for Industrial Applications



Specifications

Platform

CPU	12th/13th/14th Gen. Intel® Core i9/i7/i5/i3
Chipset	Intel® R680E
BIOS	AMI SPI Flash BIOS

System Memory

Technology	5600Mhz DDR5 ECC / Non-ECC
Max. Capacity	Up to 96GB

Ethernet

Interface	2x 2.5 GbE RJ45
Speed	100M/1G/2.5 GbE

I/O Interface

Reset Button	1
Power Button	1
Serial	1x RJ45 Console, 1x RJ45 LOM (By SKU)
COM	2x DB9 RS232/422/485
Display	1x HDMI, 1x DP 1.4
USB	8x USB 3.2 Gen1 Type A
DIO	4x DI (support PNP/NPN/dry contact) 4x DO (support dry/sink)
Audio	Mic-in, Line-out

Storage

Type	SATA III
Installation	2 x 2.5" Removable HDD/SSD
Onboard Slot	2x M.2(SATA) 2242 B-Key 1x M.2(NVMe) 2280 M-Key

Expansion

mini-PCIe/M.2	1x M.2 2230 E-Key for WiFi 6/6E (BT) 1x M.2 3042/3052 B-Key for LTE/5G
---------------	---

Features

- 12th/13th/14th Gen. Intel® Core i9/i7/i5/i3 Processors
- DDR5 SODIMM Up to 96GB
- 2x 2.5" Removable HDD/SSD, 2x M.2(SATA) 2242 B-Key, 1x M.2(NVMe) 2280 M-Key
- 2x 2.5GbE RJ45, 1x RJ45 Console, 1x RJ45 LOM (By SKU)
- 2x COM, 8x USB 3.2, 1x HDMI, 1x DP, 4x DI & DO
- 1x PCIe*16, 1x PCIe*4, 1x Nano-SIM & eSIM
- A NVIDIA-Certified System for industrial edge

PCIe Slot	1x PCIe*16 Gen4 1x PCIe*4 Gen3
SIM Card Slot	Nano-SIM x1 (each for LTE/5G module) 1x eSIM

Miscellaneous

Watchdog	Yes
Internal RTC with Li Battery	Yes
TPM	Onboard TPM 2.0

Cooling

Processor	Passive CPU Heatsink
System	2x Smart Fan for PCIe expansion

Environmental Parameters

Temperature	-25~65°C Operating with 35W CPU and without PCIe expansion card -25~45°C Operating with 65W CPU and without PCIe expansion card -40~85°C Ambient storage
Humidity (RH)	5~90% Operating 5~95% Non-Operating

System Dimensions

WxDxH	190 x 286 x 250mm
Weight	8 kg
Mounting	Wall mount

Power

Type/Watts	300W
Input	12/24 VDC

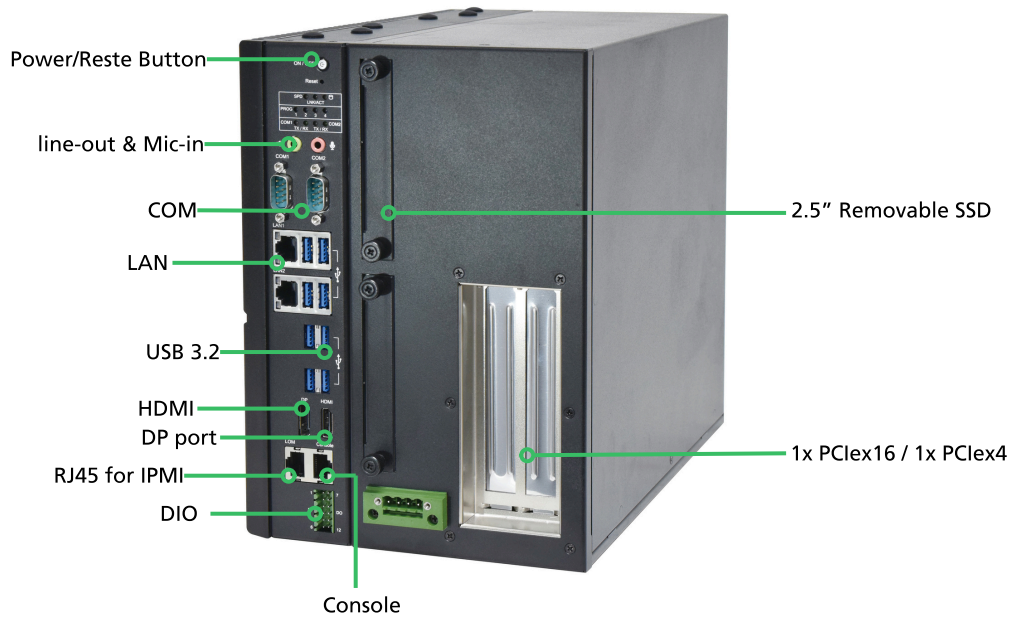
OS Support

Linux	Ubuntu 22.04
Windows	Windows 11, Win 10 IoT

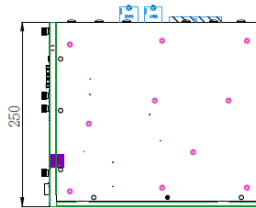
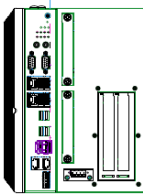
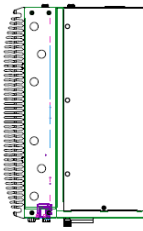
Certification

EMC	CE/FCC Class A, UKCA, UL, CB, RoHS
-----	------------------------------------

Product I/O View



Dimensions (WxDxH): 190 x 286 x 250mm



Ordering Information

SKU	CPU	Memory	Storage	Ethernet	IPMI	Console
EAI-I731A	12th/13th/14th Gen. Intel® Core i9/i7/i5/i3	2x DDR5 SO-DIMM 5600Mhz	2x 2.5" SSD Removable HDD/SSD 1x M.2(NVMe) 2280 M-Key 2x SATA M.2 2242 B-Key	2x 2.5GbE RJ45	Yes (AST2600)	1 x RJ45
EAI-I731B					N/A	N/A