

Accelerating your Time-to-Market SDN Deployment



Optimized vCPE Appliances for SD-WAN and SD-Security

Lanner works with software partners to create an integrated solution that combines Lanner's compact vCPE appliances and highly-flexible SD-WAN and SD-Security software. The joint solution enables managed service providers to centrally and cost-effectively manage a truly software-defined WAN at their network customers' sites, instead of the traditional investment in proprietary hardware and hands-on management.



High Core Count for Multiple VNFs



Inte DPDK, SR-IOV IPMI Support



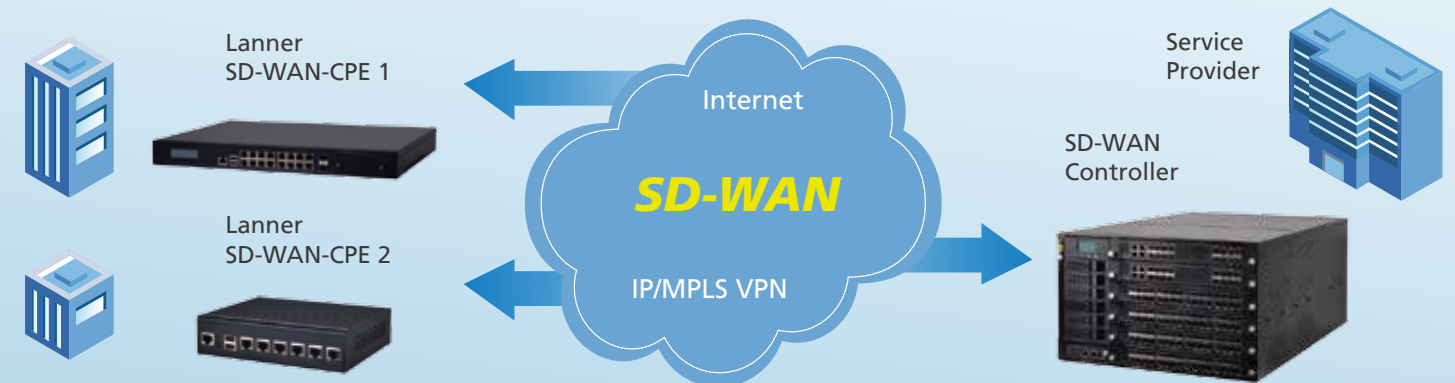
Intel QAT Crypto Acceleration



Wireless Wi-Fi LTE Connectivity

Branches / Remote Sites

Data Centers / Central Offices



- SD-Security
- SD-WAN
- CGNAT
- IPS/AV
- NGFW
- Routing App ID

- Self-care Portal
- EMS/NMS
- Performance Management
- SD-WAN Controller

Product Selections

**vCPE
(Denverton)**



**vCPE
(Denverton)**



**vCPE
(Broadwell-DE)**



**vCPE
(Broadwell-DE NS)**



Model Name	NCA-1510	NCA-2510	NCA-4010	NCA-1611
Form Factor	Compact Desktop	1U Rackmount (Short Chassis)	1U Rackmount (Short Chassis)	Desktop
Processor Options	Intel® Atom™ C3000 series 4~8 Cores	Intel® Atom™ C3000 series 8~16 Cores	Intel Xeon processor D-1500 series (Broadwell-DE), 8~16 Cores	Intel Xeon processor D-1500 series (Broadwell-DE-NS), 4~8 Cores
Chipset	SoC	SoC	SoC	SoC
System Memory	DDR4, Max. 16GB	DDR4, Max. 32GB	DDR4 Max. 32GB (ECC) and 64GB (R-DIMM)	DDR4, Max. 64GB
Ethernet Ports	4 x RJ45 GbE, 2x GbE SFP or 2x RJ45 GbE	5 x RJ45 + optional 4 x SFP+ 1x NIC modules	8 or 16 x RJ45 + 2 x SFP+	6x GbE RJ45, Optional 2x SFP, 2x SFP+
LAN Bypass	1x pair Gen.3	2 pairs Gen3 (By SKU)	3x pairs Gen.3	1x pair Gen.3
Expansion	1x Mini-PCIe (PCIe), 1x M.2 (USB/PCIe) w/ Nano SIM	Optional 1 x PCI-E*8 FH/HL	Optional 1 x PCI-E*8 FH/HL	2x Mini-PCIe Half Size, 1x w/ Nano SIM
Dimension	231 x 44 x 200 mm	438 x 321 x 44 mm	438 x 44 x 321 mm	310 x 44 x 275 mm

**vCPE
(Braswell)**



**vCPE
(Rangeley)**



**vCPE
(Rangeley)**



**vCPE
(Rangeley)**



Model Name	NCA-1020	NCA-1210	FW-7551 SE	FW-7573
Form Factor	Fanless Compact Desktop	Compact Desktop	Compact Desktop	1U Rackmount
Processor Options	Intel® Celeron® Processor N3010	Intel® Atom™ Processor C2358/C2558	Intel® Atom™ Processor C2358/C2538/C2758	Intel® Atom™ Processor C2518/C2758
Chipset	SoC	SoC	SoC	SoC
System Memory	DDR3, Max. 8GB	DDR3, Max. 16GB	DDR3, Max. 16GB	DDR3, Max. 16GB
Ethernet Ports	3 x GbE RJ-45	4 x GbE RJ-45	6 x GbE RJ-45	6 x GbE RJ-45, 1x NIC Module Slot
LAN Bypass	1 pair Gen.3	1 pair Gen.3	N/A	3 pairs Gen.3
Expansion	1x Mini-PCIe optional 1 x SSD drive	2x Mini-PCIe 4 x Antenna Holes	1x Mini-PCIe (PCIe), 1x M.2 (USB/PCIe) w/ Nano SIM	1 x PCI-E*16 FH/HL (Optional)
Dimension	136.76 x 35.5 x 119.66 mm	185.4 x 44 x 137.1 mm	231 x 44 x 200 mm	431 x 44 x 305 mm