

LandingLens Certified Edge AI Appliance



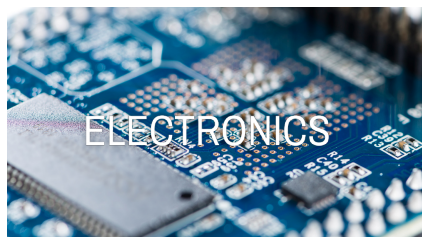
A data-centric AI approach provides a systematic method for improving data, reaching a consensus on the data, and cleaning up inconsistent data. With such an approach, teams can work in parallel and directly influence the data used for the AI system. By removing unnecessary back and forth among groups and looping in human input at the point where it's needed most, the result is reduced development time.

Lanner works with Landing AI to bring the deep learning-based visual inspection to all industries. Pre-validated with LandingLens, the world's leading Industrial AI Vision Inspection Platform, Lanner's Edge AI appliances can enable end-to-end, data-centric visual inspection with small dataset, changing environments and requirements. LandingLens makes deep learning deployment easier, faster, and more effective, helping to increase throughput, maintain product quality, and drive revenue.



Edge AI Computer LEC-2290E

- Intel® Core™ i7-8700 & Intel® Xeon® E-2278GEL
- 2x DDR4 2133/2400 SO-DIMM, Max. 64GB
- 2x RJ45, 4x PoE, 4x USB3.0, 6x COM, 8x DIO
- 2x Removable HDD/SSD External Slot w/ RAID, 1x mSATA
- 1x PCIe*16 & 1x PCIe*4



Wafer and Die Inspection
Solder quality/SMT inspection
PCB build validation
Component inspection



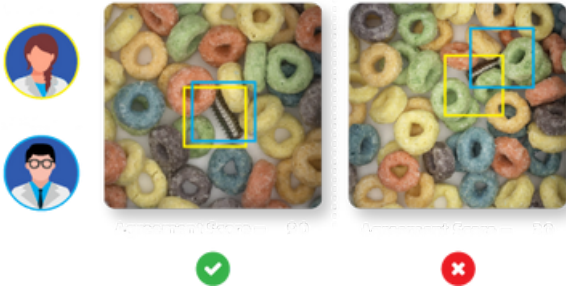
Weld inspections
Dispensing/coating verification
Glass/scratch inspection
Condition/asset-based monitoring



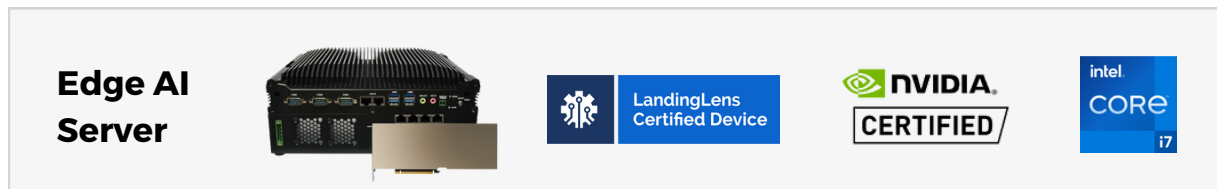
Pill inspection / Vial Counting
Vial contamination inspection
Medical device seal inspection
Final assembly verification

LandingLens, an industry-first, data-centric, deep learning inspection platform, helps improve accuracy and reduce false accepts and false rejects in critical quality tasks like defect or feature analysis and classification, and anomaly detection. The end-to-end platform standardizes deep learning implementations to reduce development time and scale projects easily to multiple facilities across the globe.

- **Makes computer vision super easy** - LandingLens is an intuitive software platform that makes an AI/deep learning-based computer vision easy.
- **Flexible deployment and continuous improvement** - Cloud and edge device deployment capabilities makes integration into existing environments easy. Deploy and test your model with just a few mouse clicks.



- **Data-Centric AI delivers accurate models faster** - Data-Centric AI makes model work with small datasets, by ensuring data quality.
- **Scaling projects faster** - From a single production line to worldwide operations, LandingLens makes scaling projects simple.



For LandingLens

Contact Landing AI Sales represent: <https://landing.ai/contact-sales/>

For LandingLens Certified IPC

Product	Processor System	AI Acceleration	Memory	Storage	Ethernet
LEC-2290E	Intel® Core™ i7-8700 (Codename Coffee Lake S)	NVIDIA A2	32GB	2x Swappable SATA III Drive	2x RJ45, 4x PoE
	Expansion	Power	Mechanical	Environment	Driver Support
	1x PCIe*16 & 1x PCIe*4, 1x Mini-PCIe, 1x B Key M.2	9~30 VDC	275 x 115 x 225 mm	0°C~40°C	Windows 10 IoT, Ubuntu 18.10, CentOS 7, Fedora 30, Linux Kernel 3.12